

# DCRI IMAGING

## Insightful Imaging Accelerating Research

DCRI Imaging is at the forefront of imaging clinical research, with Duke Imaging and Radiology faculty and staff authoring national standards for clinical care and research. The program is one of the most respected imaging clinical trials groups in the world, providing experienced oversight and independent imaging management for all phases of clinical trials, including multicenter industry trials.

Our imaging expertise encompasses all modalities and applications:

- Computed tomography
- Coronary Computed Tomography Angiography
- Coronary Artery Calcium Scans
- Echocardiography (2D, 3D, Stress, Strain, TEE)
- Electrocardiography
- AI Applications
- Hemodynamics
- Magnetic resonance imaging
- Ophthalmology: CT/KT, FP, OCT
- Positron emission tomography
- Vascular Ultrasound
- X-ray
- Angiography

In addition to ICL services, DCRI is fully equipped to provide a cross-functional approach to the aforementioned medical services core trial requirements, streamlining systems and operations to systematically generate validated, high-quality data.

### DCRI IMAGING OFFERINGS

#### Thought leadership

- Trial design
- Imaging design
- State-of-the-art imaging techniques

#### Regulatory and policy expertise

- FDA panels and committees
- Submission experience
- National guidelines authorship

#### Efficient and knowledgeable operations

- Project management
- Trial setup
- Reproducibility testing and remediation
- Data quality assurance
- Compliant with good clinical practice guidelines

#### Image-management solutions

- Web-based image transfer linked to Electronic Data Capture system
- Systems for site and sponsor review
- Secure, cloud-based image storage
- State-of-the-art analysis systems

### DCRI CSI+

+ Clinical Events Classification (CEC); + Safety Surveillance (SS); + Imaging Core Lab (ICL); + Arrhythmia Core Lab (ACL); + Hemodynamics Core Lab (HCL)

In addition to Imaging services, DCRI is fully equipped to provide a cross-functional approach to the medical services core trial requirements, ensuring a comprehensive and efficient performance of event adjudication, safety surveillance/pharmacovigilance, as well as core labs for centralized imaging interpretation of electrophysiology and/or of imaging across several modalities. DCRI's collaborative approach across our core trial medical adjudication services offers streamlined systems and operations to systematically generate validated, high-quality data.

### IMAGING EXPERIENCE IN CLINICAL TRIALS AND RESEARCH



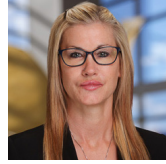
DCRI IMAGING LEADERSHIP



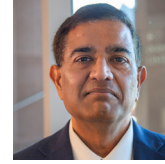
**Melissa A. Daubert, MD**  
Imaging Medical Director



**Matt Wilson, RN**  
Operations Director, CSI+



**Dawn Rabineau, BS, RDCS**  
Senior Project Leader,  
Imaging Core Lab



**Jay Rao, MS, LSSGB**  
Assistant Director, CSI+

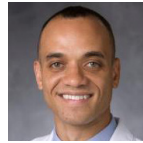
IMAGING CORE LAB FACULTY



**Michelle Kelsey, MD**  
Cardiology



**Pamela Douglas, MD**  
Cardiology



**Gerald S. Bloomfield, MD, MPH**  
Cardiology



**Katherine Cheng, MD**  
Radiology



**Titus Ngeno, MD**  
Cardiology



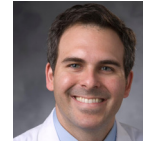
**Tina Tailor, MD**  
Radiology



**Jonathan Stiber, MD**  
Cardiology



**Sean Pokorney, MD, MBA**  
Electrophysiology



**Michel Khouri, MD**  
Cardiology



**Cara Hoke, MD**  
Cardiology



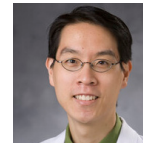
**Jennifer Li, MD**  
Pediatrics



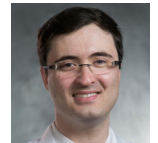
**Andrew Landstrom, MD, PhD**  
Pediatric EP



**Glenn J. Jaffe, MD**  
Ophthalmology



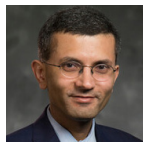
**Anthony Kuo, MD**  
Ophthalmology



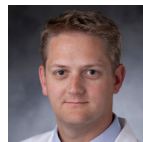
**Marat Fudim, MD**  
Cardiology



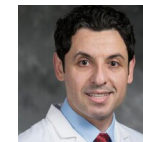
**Brad Kolls, MD, PhD**  
Neurology



**Aatif Husain, MD**  
Neurology



**Peter Kranz, MD**  
Neuroradiology



**Fawaz Alenezi, MD, MSc**  
Cardiology

Learn more about DCRI Imaging

**Melissa A. Daubert, MD, FASE, FACC, FSCCT**  
Imaging Medical Director  
919-613-0343  
melissa.daubert@duke.edu

**Dawn Rabineau, BS, RDCS**  
Senior Project Leader, Imaging Core Lab  
919-688-8024  
dawn.rabineau@duke.edu

**Matt Wilson, RN**  
Operations Director, CSI+  
919-309-5460  
matthew.d.wilson@duke.edu

[dcri.org/imaging](https://dcri.org/imaging)