

DCRI DATA ANALYSES & PUBLICATIONS

Communicate Results Through Publications

A mission-driven organization, the DCRI is developing and sharing knowledge that improves the care of patients around the world through innovative clinical research. As part of this mission, Data Analyses & Publications combines the thought leadership of its clinical and statistical faculty with its biostatistics and publications management expertise.

You need:

- Quality, impact, and credibility
- Clinical interpretation for health care providers
- Accurate interpretation and presentation of data
- Efficient publications planning to ensure prompt dissemination

We offer:

- Renowned academic and clinical thought leadership
- Clinical, disease-specific faculty who participate in the planning and presentation of the science
- Statistical expertise
- Experienced publications project managers
- Skilled medical editors

NUMBERS THAT MATTER

600+

publications in peer-reviewed journals (since 2000)

>35%

of publications in top-tier journals

400+

abstract presentations at national and international congresses (since 2000)

1130+

collaborating authors

690+

institutions represented by coauthorship

50+

countries represented by coauthorship

CLINICAL THOUGHT LEADERSHIP

- Practicing Duke clinicians leading innovations in research
- Demonstrated success in partnering with a global network of academic collaborators



BIOSTATISTICS

- Statistical experts who ask the right questions to define the appropriate analyses
- Tailored methods using best-in-class tools and mathematical algorithms



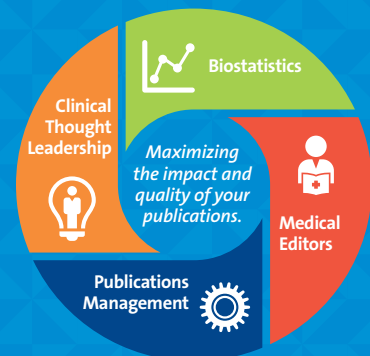
PUBLICATIONS MANAGEMENT

- Publications experts collaborate with publications committees, principal investigators, authors, and sponsors to manage review and submission process to meet objectives and timelines
- Experienced in developing strategic publications plans to target appropriate meetings and journals and ensure prompt dissemination



MEDICAL EDITORS

- Skilled medical editors knowledgeable about current ICMJE recommendations and GPP3 guidelines
- Editorial support for manuscripts, abstracts, and poster and slide presentations



DCRI DATA ANALYSES & PUBLICATIONS

Find out more about
DCRI Data Analyses &
Publications.

Lisa Wruck, PhD

Director, Center for
Predictive Medicine

919-668-7508

lisa.wruck@duke.edu

Elizabeth Cook

Manager, Medical Communications
& Scientific Publications

919-668-5905

elizabeth.cook@duke.edu

dcri.org

OUR TRACK RECORD



LEADERSHIP



Kevin Anstrom, PhD
Director, DCRI
Biostatistics



John Alexander, MD, MHS
Director, DCRI
Cardiovascular Research



Lisa Wruck, PhD
Director, Center for
Predictive Medicine



Elizabeth Cook
Manager, Medical
Communications &
Scientific Publications



Duke Clinical Research Institute

FROM THOUGHT LEADERSHIP
TO CLINICAL PRACTICE